

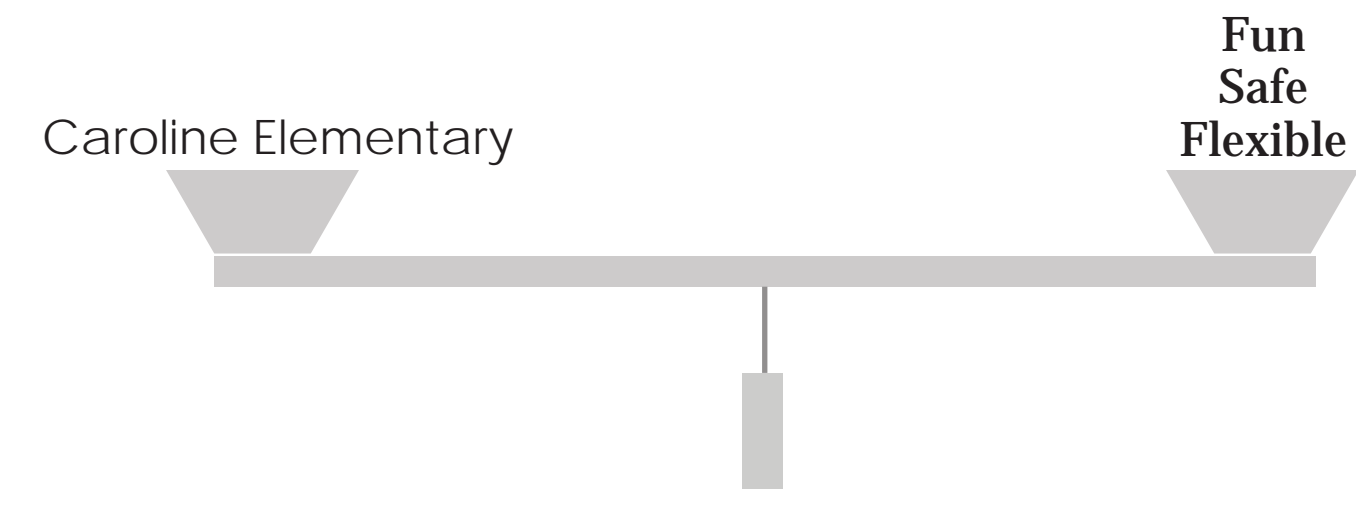
## VISION

The scope of this project involves creating a fun and well-integrated plan to enhance the learning and play experience for each and every child at Caroline Elementary. The result allows for a unified space where teachers, staff, students, parents and the general public can come and feel comfortable and confident that their children will grow up with the maximum potential to succeed. This design is a response to a workshop with 5th grade students from Caroline Elementary and research that speaks to the ways in which children develop and how school grounds have a large effect on how children behave, strengthen motor skills, think, feel and make independent decisions.

## GOALS

The goal of this project is to create zones that provide opportunities for the children to make the decision of how they want play in each space. The main idea is the opposite of a traditional school ground. Instead of providing set activities with set boundaries, this design provides general areas with elements that provide some mystery and flexibility for play and development.

- Design spaces as the basis for children to decide how they want to play | less traditional
- Think about all the users of the space  
*students, teachers, staff, parents, general public*
- Provide mystery to play  
*take full advantage of the nature trail*
- Promote development for all types of learning styles and children



## PRECEDENTS



<http://www.site-design.com/projects/natural-playground-design/>  
 Montessori Natural Playground  
 Chicago, IL

The goal of this project was to provide spaces for children to discover, hide, learn, and engage the natural environment. This site has sand pits, water features, topography changes, and various plant materials to create a unique play space for children.



<http://thelearninglandscape.blogspot.com/2012/10/nature-play-inspiration-school-grounds.html>  
 Turtle Rock Pre School  
 Irvine, CA

Main two design goals were to create spaces for children to use their imagination and build. This project focuses on highlighting the significance the outdoors can have on physical and mental health of a developing child. Project was designed by the Natural Play Ground Company.

## PRESENT DAY CAROLINE ELEMENTARY



Currently: Woods  
 Potential: Bird Discovery & Observation Posts



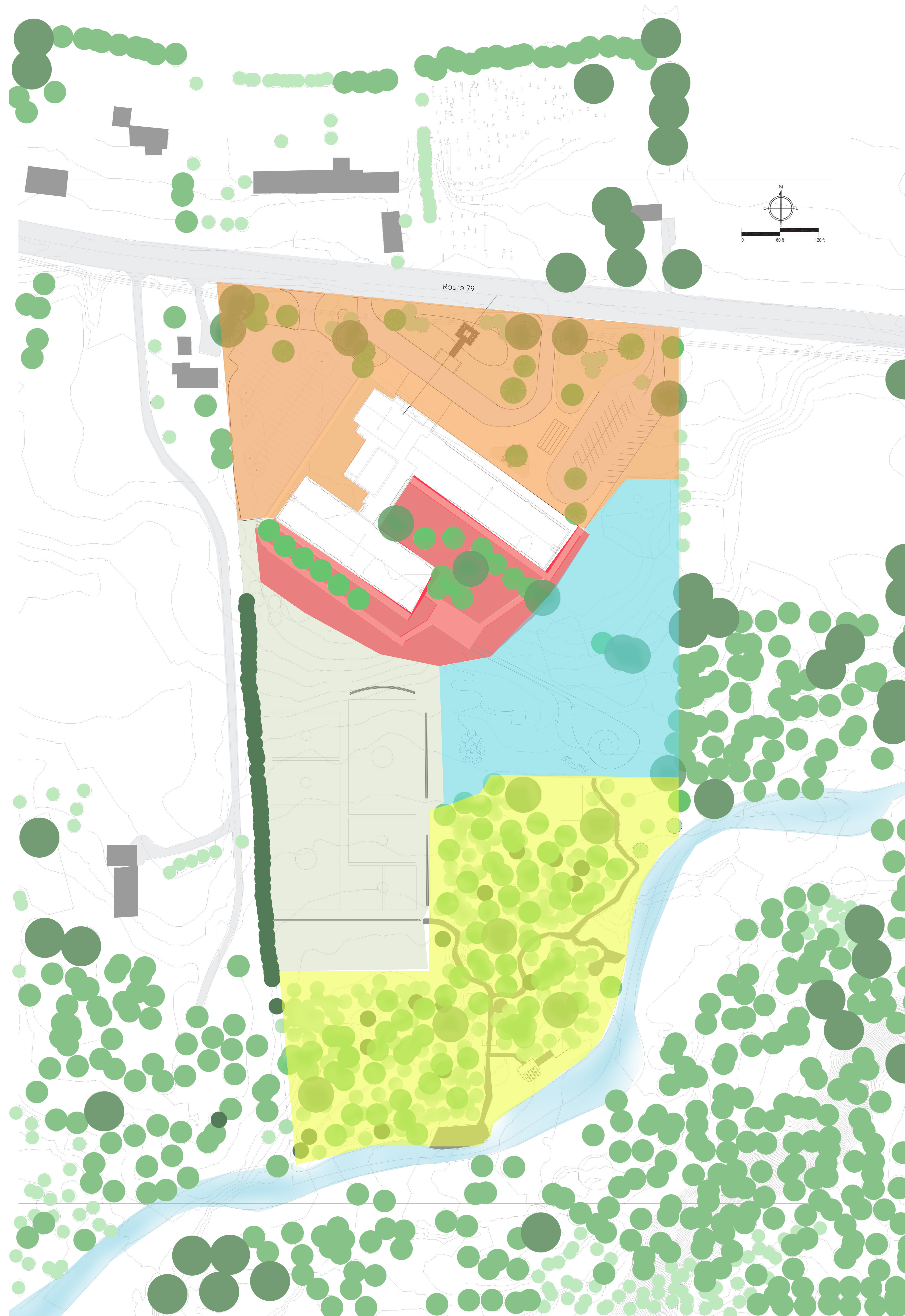
Currently: Bus Loop and Front Yard Area  
 Potential: Bio-retention ponds and Safer Entrance



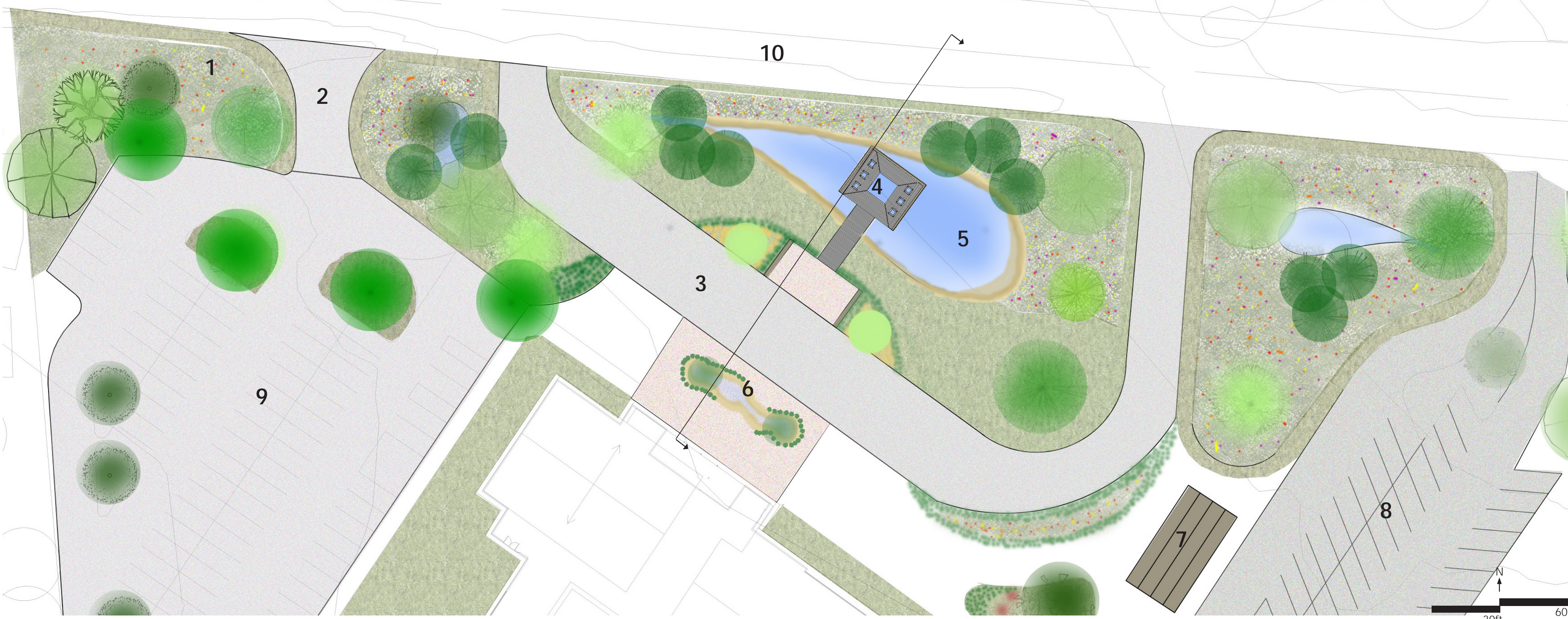
Currently: Playing Field  
 Potential: Dynamic Play Space with Sand Pit, Rock Climbing and Anarchy Zone



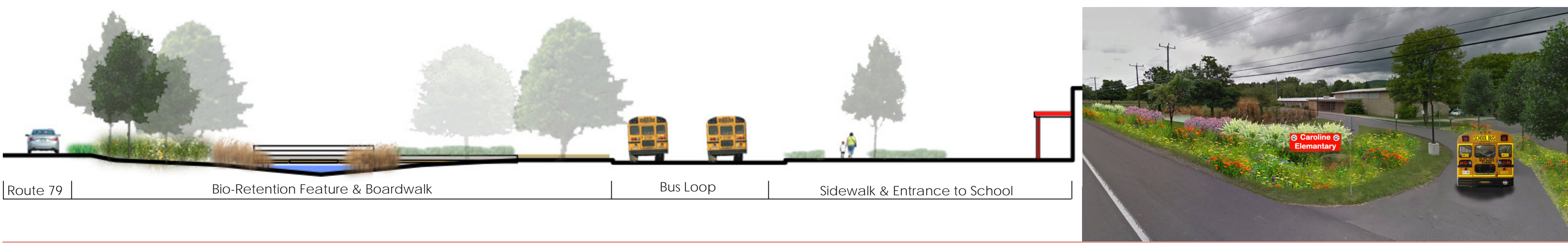
Currently: Old Basketball Court  
 Potential: Central Gathering/Event Space



# AREA 1 - FRONT ENTRANCE



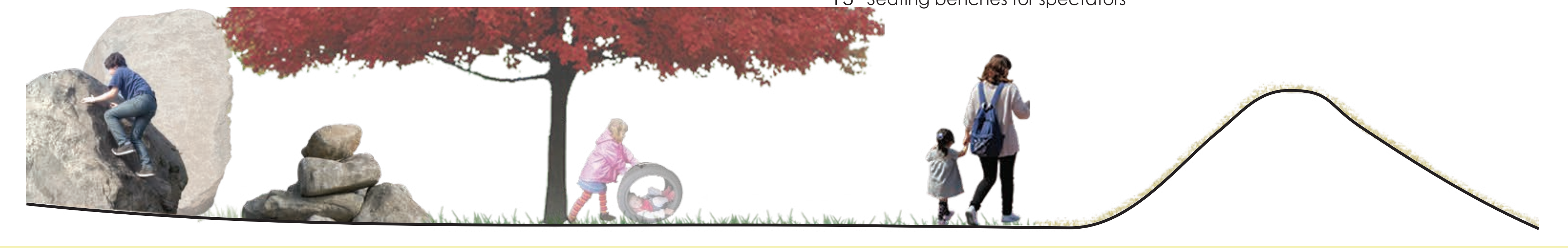
- 1 Planting beds along the North property boundary adjacent to Highway 79. Acts as a buffer zone between school and the road.
- 2 New entrance to parking lot; Separated from bus loop
- 3 Bus Only Loop
- 4 Boardwalk | Viewing Area for bio-retention areas. Learning opportunity for stormwater
- 5 Bio-retention feature
- 6 Pond | Planted area in front of entrance to school
- 7 Overhead structure. Acts as a waiting area for parents picking up or dropping off their children.
- 8 Parent Drop-Off and Pick-Up parking lot
- 9 Teachers, Staff and Visitor parking lot
- 10 Route 79



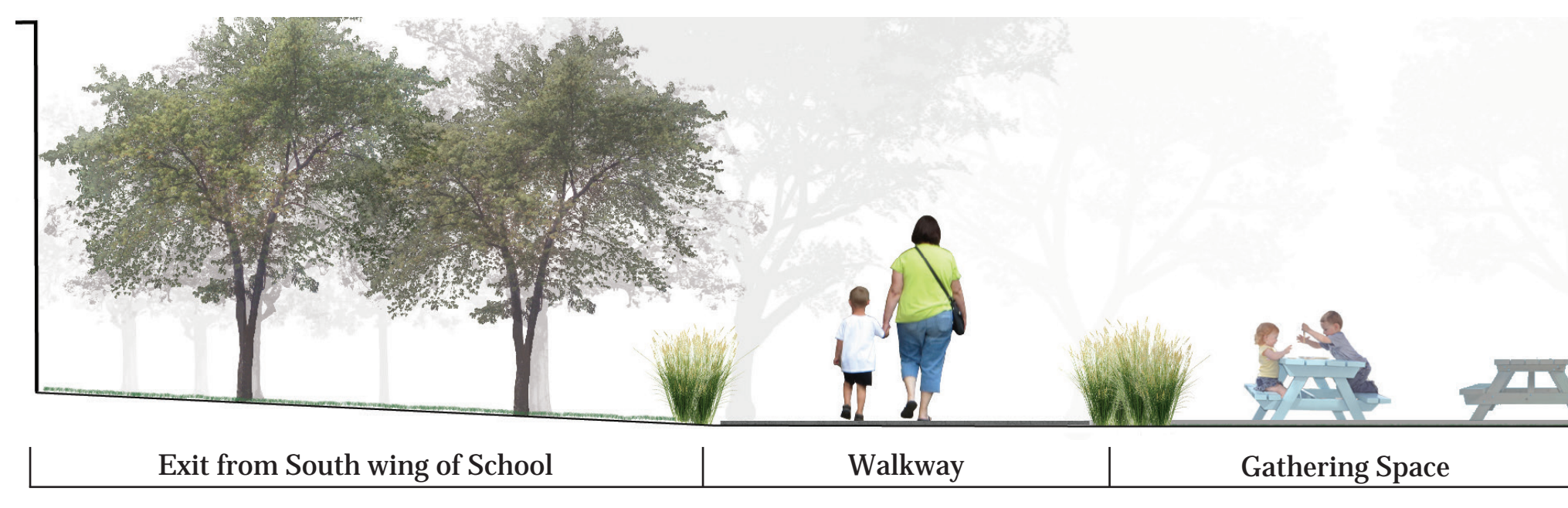
# AREA 3 - PLAY AREA



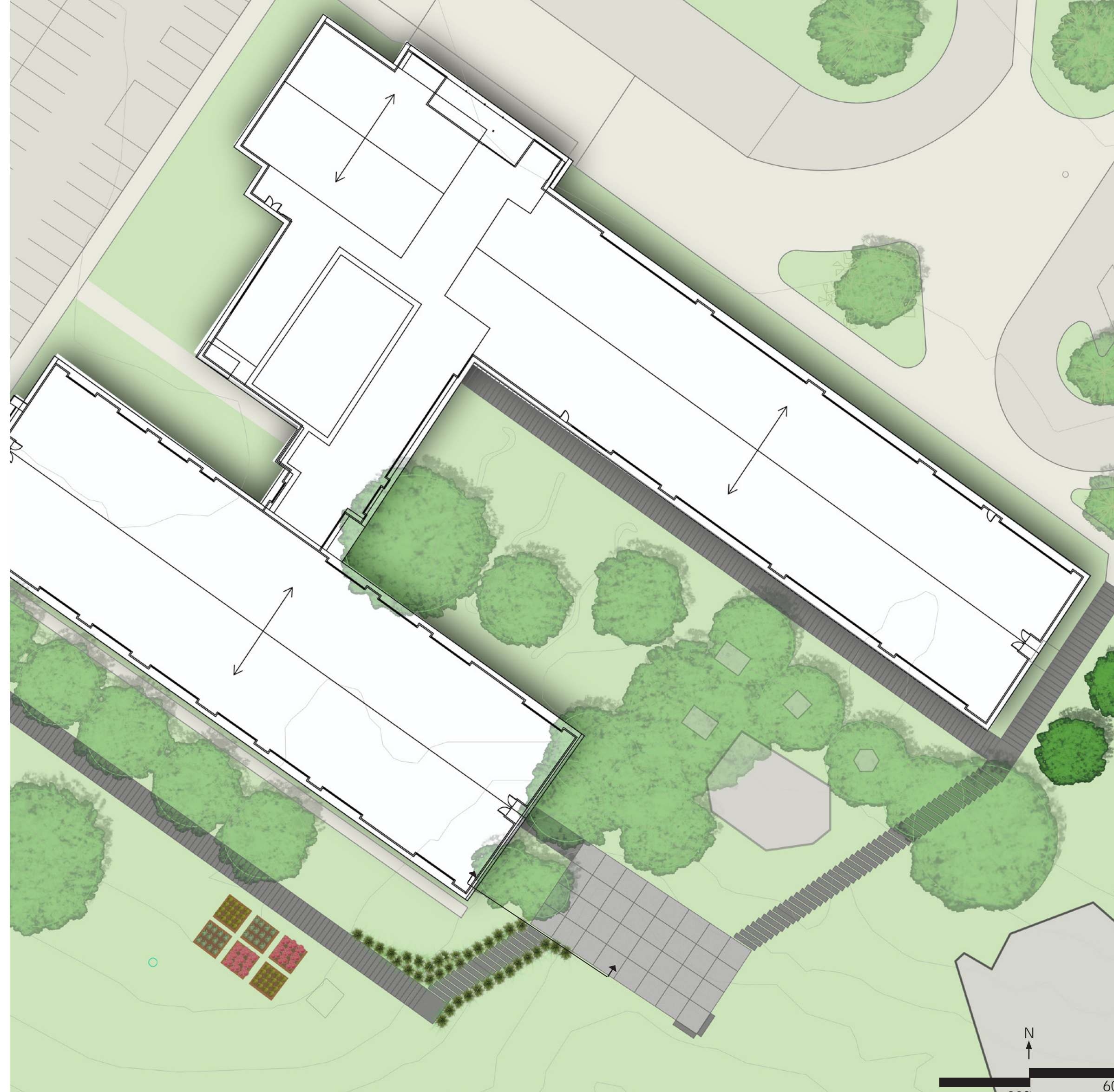
- 1 Crushed stone curved pathway
- 2 Paved pathway
- 3a Anarchy Zone
- 3b Anarchy Zone
- 4 Short Overlook for children to observe what is happening around them
- 5 Paved area that serves as a watching point for teachers and parents (handicap accessible)
- 6 Sand playing area
- 7 Raised Sand Boxes. Gives an opportunity for children to play up higher with sand and also allow someone in a wheelchair to play with sand.
- 8 Drift-wood pile. Light and easy to build with.
- 9 4 Foot Tall Sand Hill
- 10 Willow Tunnel leading into the Nature Trail
- 11 Rock Pile Climbing Area. Allows children to climb and hide behind
- 12 Playing Fields
- 13 Seating benches for spectators



# AREA 2 - COURTYARD



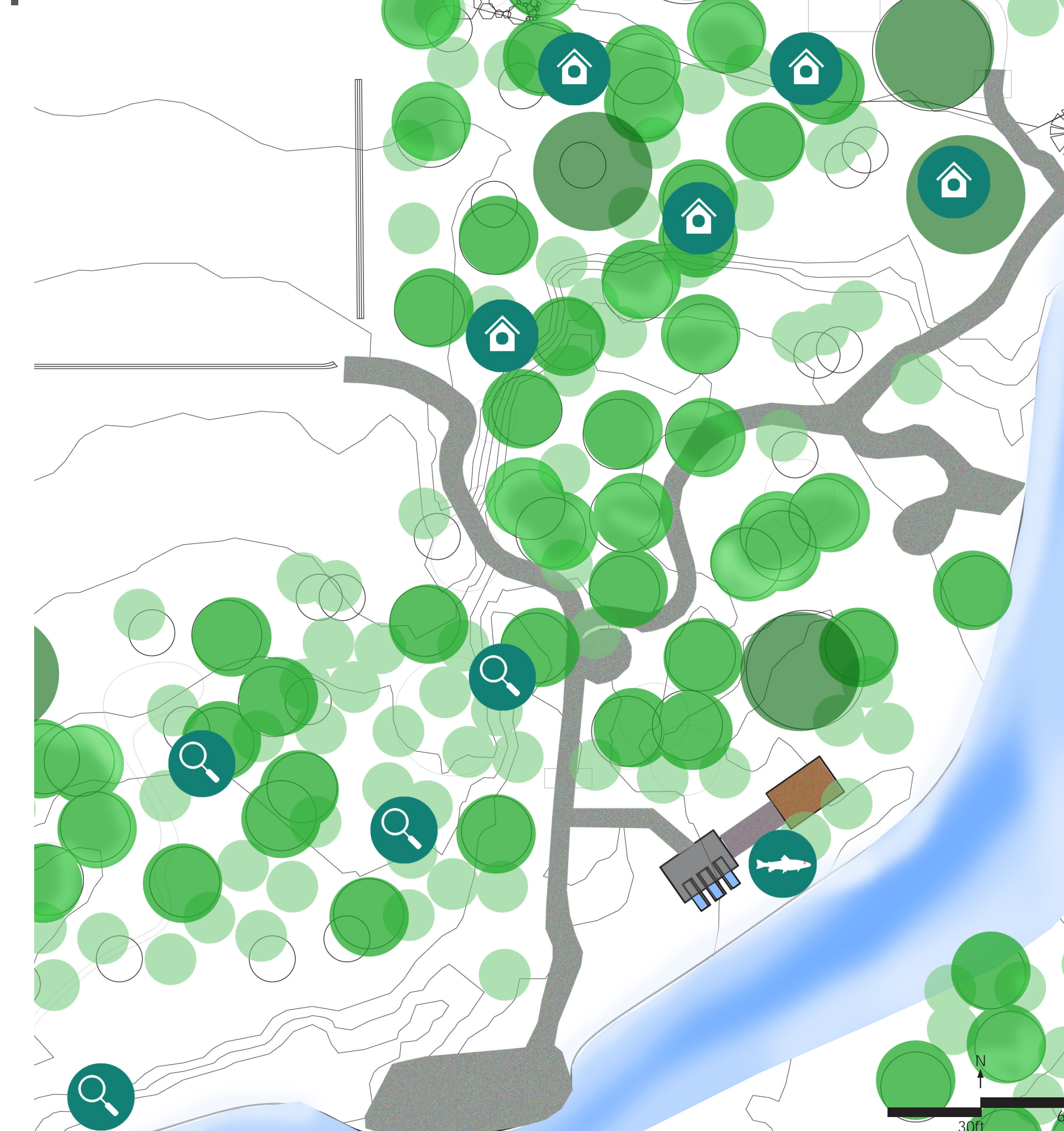
**Transitioning**  
The area surrounding the school contains pathways that lead from both parking lots allowing visitors to change their perspective from the highway and parking lots to the back of the school. This not only changes children's perspectives but adults as well.



**Central Gathering Space**  
The central gathering space can have many functions. It acts as an area where adults have wide range of vision to watch children. It also acts as a flexible space for outdoor concerts, art work displays, staff meetings and more.

**Class Garden Boxes**  
As of right now the elementary school has only 1 garden spot. It was evident to us during our workshop with the 5th graders that they felt left out and wanted to garden. There are 6 garden boxes here, representing the six different classes.

# AREA 4 - NATURE TRAIL | WOODS



**Bird House Discovery**  
The Bird House Discovery zone is a place where there is no defined trail. Students find their way throughout the area by locating different bird houses. Bird house locations can be changed many times a year to keep interest.

**Observation Posts**  
This area allows children to identify items in the woods such as plant and animal species and their habitats. This will allow them to be more observant and excited to search for new things. Like the birdhouses, these posts can also change location.

**Trout Hatchery**  
The Trout Hatchery is a unique space set up for students who are studying trout. The purpose of this idea is to allow students to actively learn about trout and have a designated area where they can release the trout into the creek.